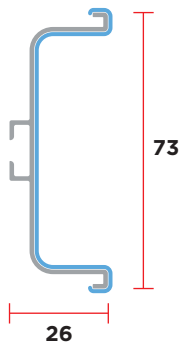


# 8007

Profilo gola cassettera/cestoni

Gola profile for drawers

M I G A V



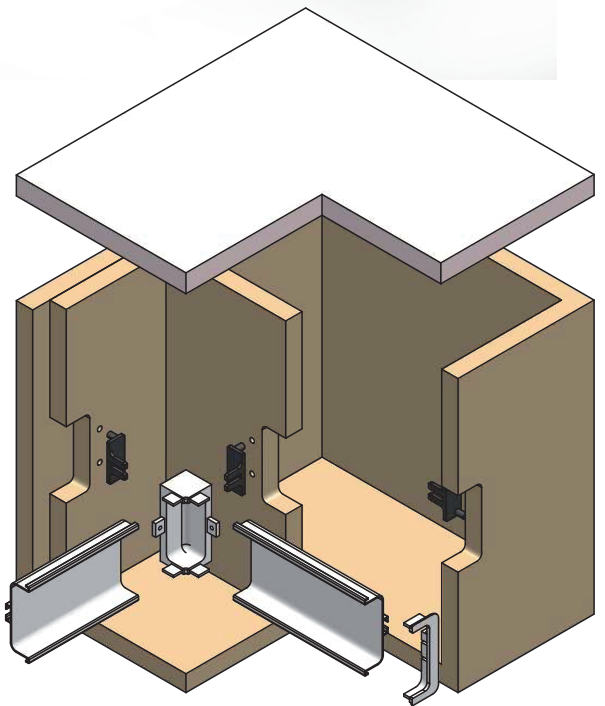
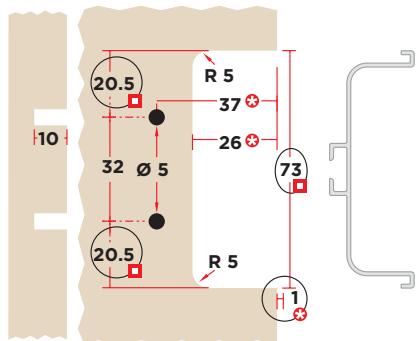
✳ Con le quote indicate si ottiene la sporgenza di 1 mm del Profilo Gola dal fianco.

Se non si desidera avere la sporgenza, aumentare di 1 mm le quote indicate.

The quoted dimensions considers that the Gola Profile will overcome the side of the cabinet of 1 mm. In case the Gola Profile has to be flush with the cabinet sides, then the quoted dimensions has to be increased of 1 mm.

▣ Se il profilo è impiallacciato la fresata deve essere di 74 mm e le quote 20,5 passano a 21,0.

In case profile will be "veneered", milling quote will be of 74 mm and dimension 20,5 will become 21,0.



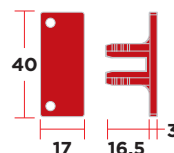
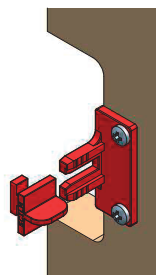
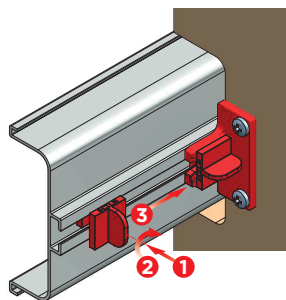
CODE	UNIT	DIMENSION	MIN ORDER QTY	PCS/BOX	BOX SIZES	WEIGHT	VOLUME
		L	ML	NR	L X B X H	KG	M <sup>3</sup>
8007xxxL41	ML	4100	41	10	BOX146 4250x205x80	16,50	0,069

# SU116



Supporto rapido attacco a vite

Screw fixing quick support



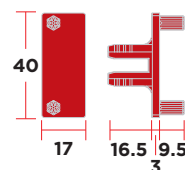
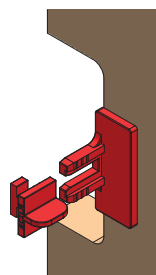
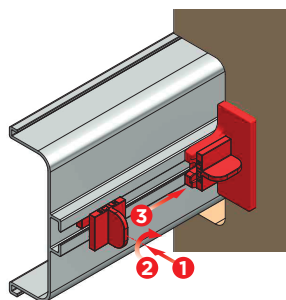
CODE	UNIT	DIMENSION	MIN ORDER QTY	PCS/BOX	BOX SIZES	WEIGHT	VOLUME
			NR	NR	L X B X H	KG	M <sup>3</sup>
<b>SU116DS590000</b>	CP	-	300	300	BOX01PB 400x300x200	3,30	0,024

# SU136



Supporto rapido con pioli

Pins fixing quick support

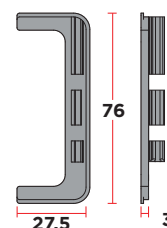


CODE	UNIT	DIMENSION	MIN ORDER QTY	PCS/BOX	BOX SIZES	WEIGHT	VOLUME
			NR	NR	L X B X H	KG	M <sup>3</sup>
<b>SU136DS590000</b>	CP	-	300	300	BOX01PB 400x300x200	3,30	0,024

# CF8007TP

Coppia terminali universali

Couple of universal end caps

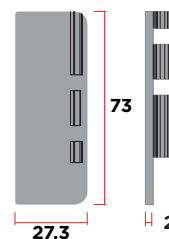


CODE	UNIT	DIMENSION	MIN ORDER QTY	PCS/BOX	BOX SIZES	WEIGHT	VOLUME
			NR	NR	L X B X H	KG	M <sup>3</sup>
<b>CF8007TPxxx</b>	CF	-	9	9	blister	0,25	-

# CF8007TPIxxxC

Coppia terminali universali

Couple of universal end caps



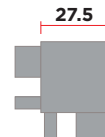
CODE	UNIT	DIMENSION	MIN ORDER QTY	PCS/BOX	BOX SIZES	WEIGHT	VOLUME
			NR	NR	L X B X H	KG	M <sup>3</sup>
<b>CF8007TPIxxxC</b>	CF	-	9	9	blister	0,40	-

# SG8007

Spigolo 90°

90° external corner

**A V**



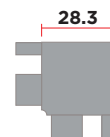
CODE	UNIT	DIMENSION	MIN ORDER QTY	PCS/BOX	BOX SIZES	WEIGHT	VOLUME
			NR	NR	L X B X H	KG	M <sup>3</sup>
<b>SG8007-xxx</b>	NR	-	18	18	blister	0,68	-

# AG8007

Angolo 90°

90° internal corner

**A V**



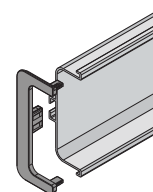
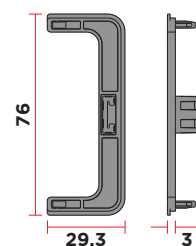
CODE	UNIT	DIMENSION	MIN ORDER QTY	PCS/BOX	BOX SIZES	WEIGHT	VOLUME
			NR	NR	L X B X H	KG	M <sup>3</sup>
<b>AG8007-xxx</b>	NR	-	18	18	blister	1,57	-

## TGCSP0160

Terminale aperto universale

Universal end cap

P



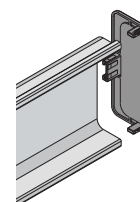
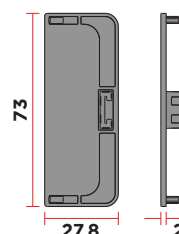
CODE	UNIT	DIMENSION	MIN ORDER QTY	PCS/BOX	BOX SIZES	WEIGHT	VOLUME
			NR	NR	L X B X H	KG	M <sup>3</sup>
<b>TGCSP0160-xx</b>	CP	-	100	100	BOX74 310x170x120	-	0,006

## FGCSP0161

Terminale chiuso universale

Universal end cap

P



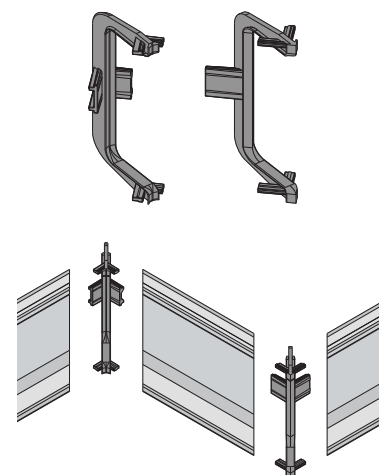
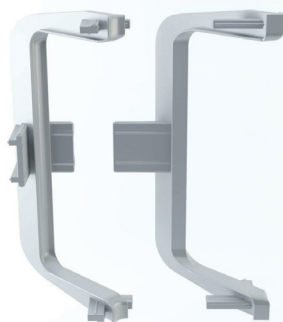
CODE	UNIT	DIMENSION	MIN ORDER QTY	PCS/BOX	BOX SIZES	WEIGHT	VOLUME
			NR	NR	L X B X H	KG	M <sup>3</sup>
<b>FGCSP0161-xx</b>	CP	-	100	100	BOX74 310x170x120	-	0,006

## AGP8007

Set angolo interno + esterno 45°

Set internal + external corner 45°

P



CODE	UNIT	DIMENSION	MIN ORDER QTY	PCS/BOX	BOX SIZES	WEIGHT	VOLUME
			NR	NR	L X B X H	KG	M <sup>3</sup>
<b>AGP8007-xx</b>	CP	-	100	100	BOX74 310x170x120	-	0,006